



Date: 05/03/12

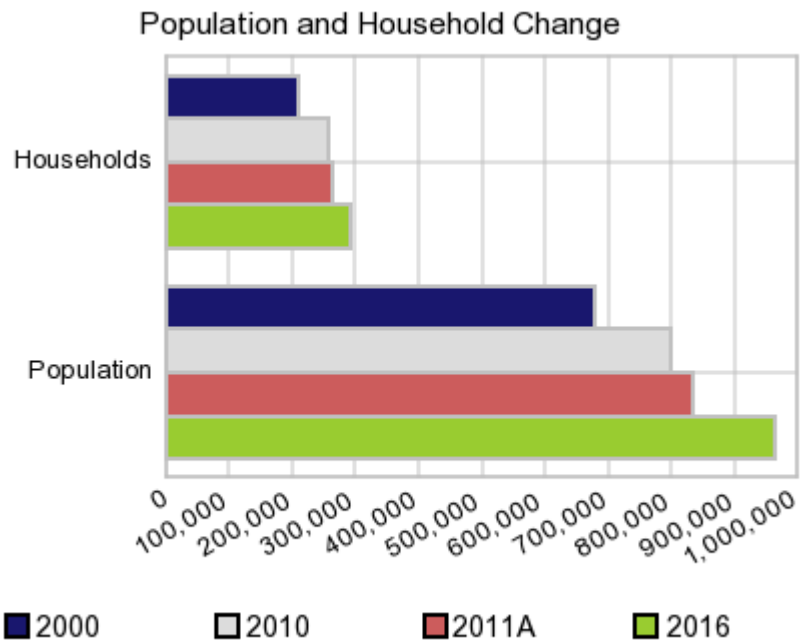
Current Geography Selection: (1 Selected) Counties: El Paso County

Executive Summary Report with Charts

Population Demographics:

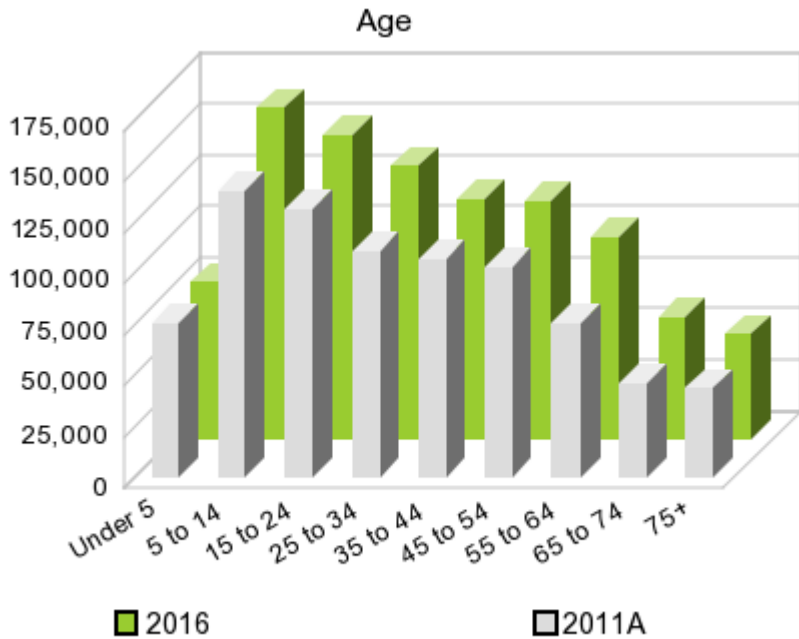
The number of households in the study area in 2000 was **210,022** and changed to **256,557** in 2010, representing a change of **22.2%**. The household count in 2011A was **263,851** and the household projection for 2016 is **292,973**, a change of **11.0%**.

The population in the study area in 2000 was **679,622** and in 2010 it was **800,647**, roughly a **17.8%** change. The population in 2011A was **833,022** and the projection for 2016 is **962,480** representing a change of **15.5%**.



	2000 Census	2010 Census	2011A Estimate	2016 Projection	Percent Change	
					2000 to 2010	2011 to 2016
Total Population	679,622	800,647	833,022	962,480	17.8%	15.5%
Total Households	210,022	256,557	263,851	292,973	43.8%	11.0%

Population by Age



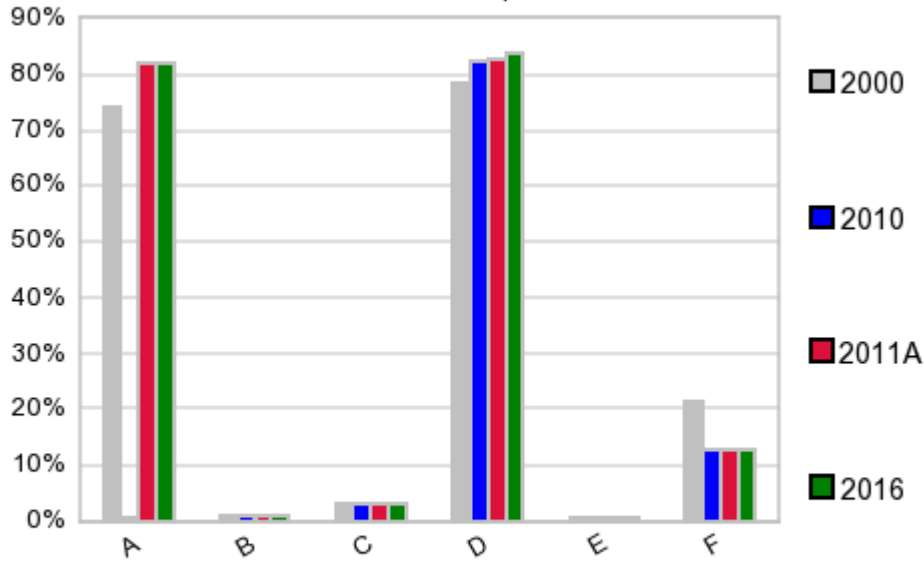
In 1990, the median age of the total population in the study area was **28**, and in 2000, it was **30**. The median age in 2011A is **31** and it is predicted to change in five years to **32** years. In 2011A, females represented **51.8%** of the population with a median age of **33** and males represented **48.2%** of the population with a median age of **29** years. In 2011A, the most prominent age group in this geography is **Age 5 to 14** years. The age group least represented in this geography is **75 +** years.

Age Groups*

	1990 Census		2000 Census		2011A Estimate		2016 Projection		Percent Change	
		%		%		%		%	1990 to 2000	2011 to 2016
0 to 4	53,031	9.0%	58,989	8.7%	75,518	9.1%	76,177	7.9%	11.2%	0.9%
5 to 14	106,322	18.0%	122,361	18.0%	140,381	16.9%	161,823	16.8%	15.1%	15.3%
15 to 19	56,021	9.5%	58,609	8.6%	67,199	8.1%	75,215	7.8%	4.6%	11.9%
20 to 24	50,067	8.5%	49,503	7.3%	63,953	7.7%	73,682	7.7%	-1.1%	15.2%
25 to 34	101,540	17.2%	98,208	14.5%	110,921	13.3%	133,335	13.9%	-3.3%	20.2%
35 to 44	80,787	13.7%	100,790	14.8%	106,925	12.8%	117,014	12.2%	24.8%	9.4%
45 to 54	51,693	8.7%	76,876	11.3%	103,006	12.4%	115,934	12.0%	48.7%	12.6%
55 to 64	43,846	7.4%	48,213	7.1%	75,378	9.0%	98,038	10.2%	10.0%	30.1%
65 to 74	30,226	5.1%	38,983	5.7%	46,527	5.6%	60,008	6.2%	29.0%	29.0%
75 +	18,037	3.0%	27,090	4.0%	43,174	5.2%	51,246	5.3%	50.2%	18.7%

Population by Race/Ethnicity

Race and Ethnicity Percent Composition



In 2011A, the predominant race/ethnicity category in this study area is **Hispanic**. The race & ethnicity category least represented in this geography is **American Indian, Alaska Native**.

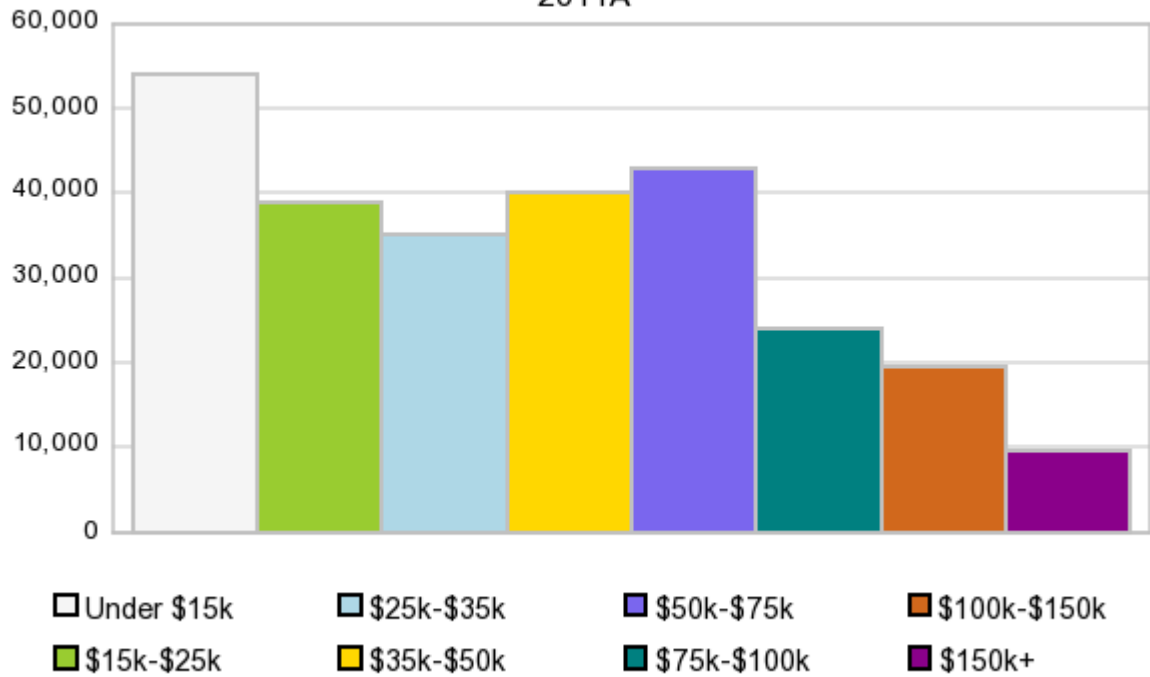
A: White
 B: Asian Pac Islr
 C: Black
 D: Hispanic
 E: Amer Indian or Alaska Native
 F: Other or Multi Race

Race & Ethnicity	2000		2010		2011A		2016		Percent Change	
	Census	%	Census	%	Estimate	%	Projection	%	2000 to 2010	2011 to 2016
White	502,579	74.0%	656,993	82.1%	683,285	82.0%	788,278	81.9%	30.7%	15.4%
Black	20,809	3.1%	24,864	3.1%	26,004	3.1%	30,599	3.2%	19.5%	17.7%
American Indian or Alaska Native	5,559	0.8%	6,007	0.8%	6,258	0.8%	7,259	0.8%	8.1%	16.0%
Asian/Hawaiian/PI	7,302	1.1%	9,283	1.2%	9,649	1.2%	11,112	1.2%	27.1%	15.2%
Some Other Race	121,721	17.9%	83,796	10.5%	90,758	10.9%	105,418	11.0%	-31.2%	16.2%
Two or More Races	21,652	3.2%	19,704	2.5%	17,087	2.1%	19,828	2.1%	-9.0%	16.0%
Hispanic Ethnicity	531,654	78.2%	658,134	82.2%	687,593	82.5%	805,442	83.7%	23.8%	17.1%
Not Hispanic or Latino	147,968	21.8%	142,513	17.8%	145,430	17.5%	157,040	16.3%	-3.7%	8.0%

Households by Income

Households by Income Group 2011A

In 2011A the predominant household income category in this study area is **\$0 - \$15K**, and the income group that is least represented in this geography is **\$150K +**.



HH Income Categories*

	1990		2000		2011A		2016		Percent Change	
	Census	%	Census	%	Estimate	%	Projection	%	1990 to 2000	2011 to 2016
\$0 - \$15,000	58,430	32.8%	48,157	22.9%	54,088	20.5%	58,031	19.8%	-17.6%	7.3%
\$15,000 - \$24,999	38,810	21.8%	36,779	17.5%	38,939	14.8%	40,727	13.9%	-5.2%	4.6%
\$25,000 - \$34,999	28,520	16.0%	31,416	15.0%	35,031	13.3%	37,148	12.7%	10.2%	6.0%
\$35,000 - \$49,999	25,542	14.3%	34,594	16.5%	40,001	15.2%	42,700	14.6%	35.4%	6.7%
\$50,000 - \$74,999	17,967	10.1%	32,141	15.3%	42,726	16.2%	48,269	16.5%	78.9%	13.0%
\$75,000 - \$99,999	5,028	2.8%	13,635	6.5%	23,964	9.1%	29,351	10.0%	171.2%	22.5%
\$100,000 - \$149,999	2,471	1.4%	8,642	4.1%	19,572	7.4%	25,098	8.6%	249.7%	28.2%
\$150,000 +	1,492	0.8%	4,658	2.2%	9,520	3.6%	11,592	4.0%	212.2%	21.8%
Average Hhld Income	\$29,754		\$42,518		\$50,201		\$54,303		42.9%	8.2%
Median Hhld Income	\$22,652		\$31,139		\$36,282		\$38,493		37.5%	6.1%
Per Capita Income	\$9,130		\$13,139		\$16,553		\$17,222		43.9%	4.0%

*This Census 2010 data has not yet been released

Current year data is for the year **2011**, 5 year projected data is for the year **2016**. More About Our Data.
Demographic data ' 2011 by Experian/Applied Geographic Solutions.

Business List data ' 2011 by D&B^{fi}. All rights reserved. All D&B information is powered by DUNSRight™, D&B's Quality Process.

' 2011. DDR is brought to you by Alteryx, Inc.

Alteryx, DemographicsNow.com and the Alteryx and DemographicsNow.com logos are trademarks of Alteryx, Inc. All rights reserved.

Privacy Statement | License Agreement